

Evolution and future development of Tower Cranes

Nicola Castenetto
Customer Care Director



In memory of...



The beginning



Experience



Tower Cranes: It's a piece of cake



Steel puzzle with no high-tech to

Just get the lift done!

....and what about safety?



What did the industry then start to look for?

1.LOWER THE COST

2.INCREASE THE REVENUE

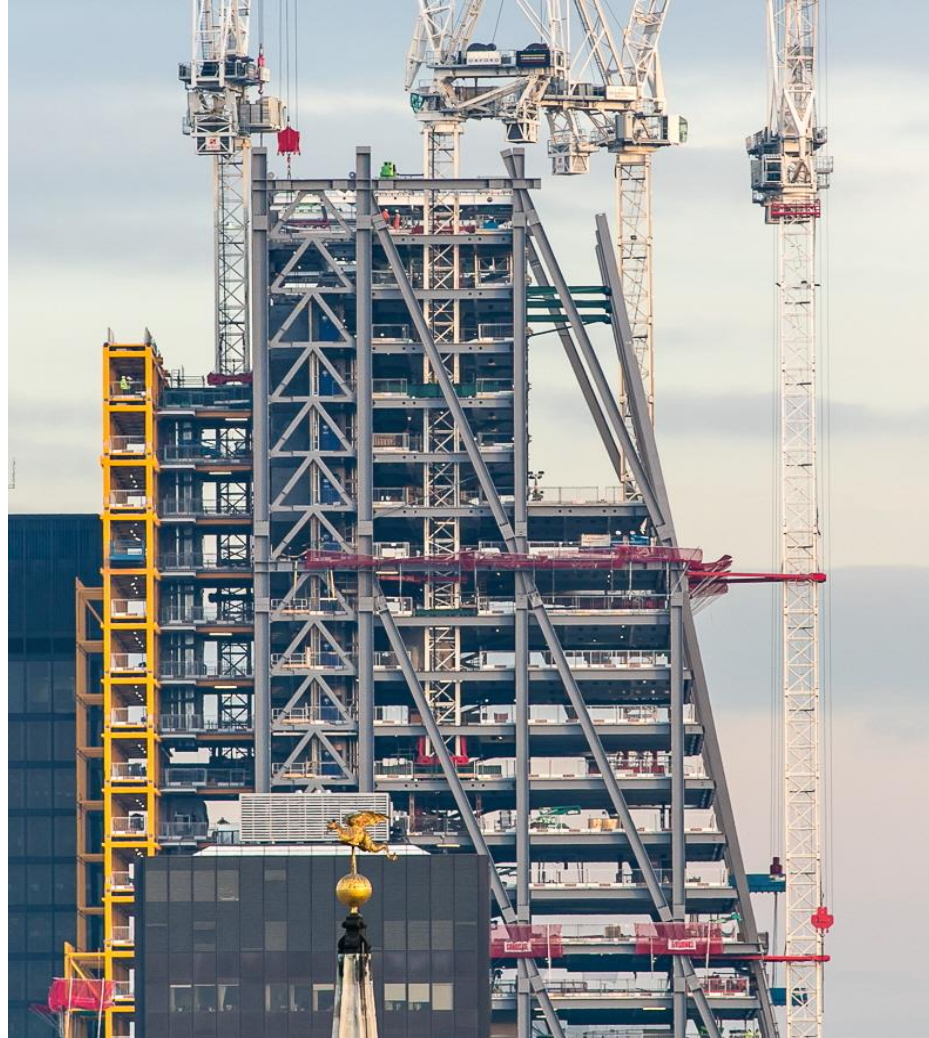
3.SAFETY

Yesterday to Today: Cranes

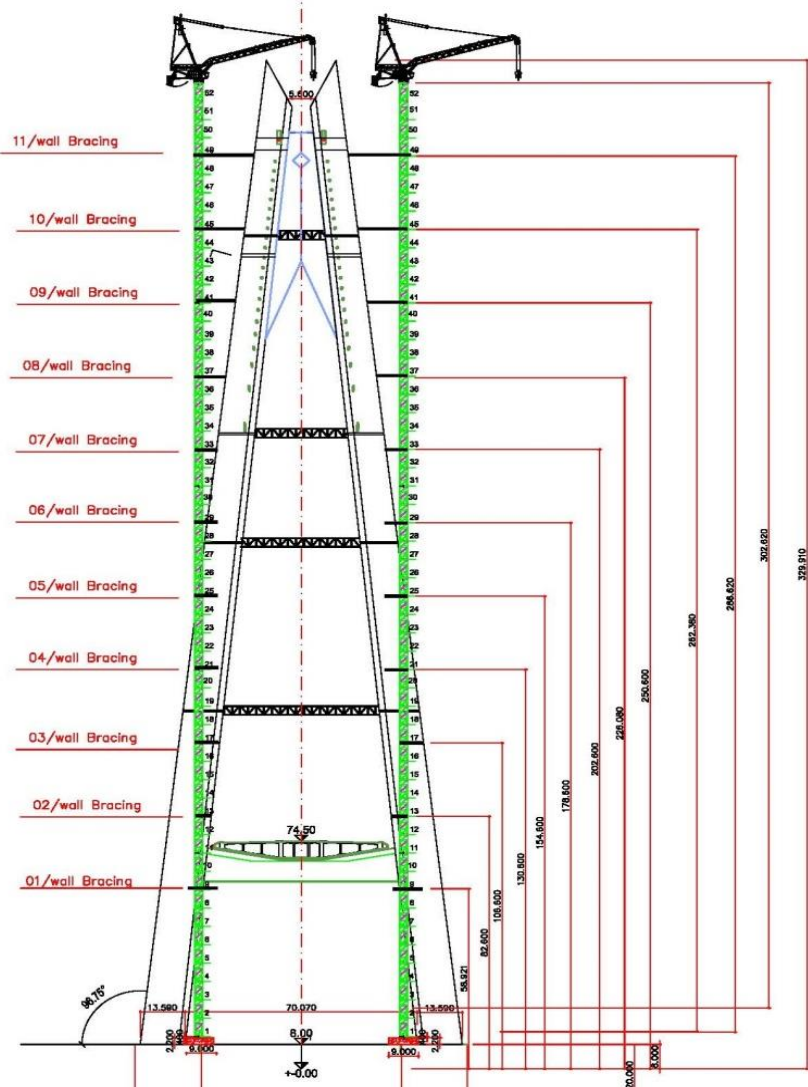
- Towards bigger cranes
- Parts modularity
- Several cranes working/talking together
- Luffing jib cranes



Luffing Jib cranes



Luffing Jib cranes



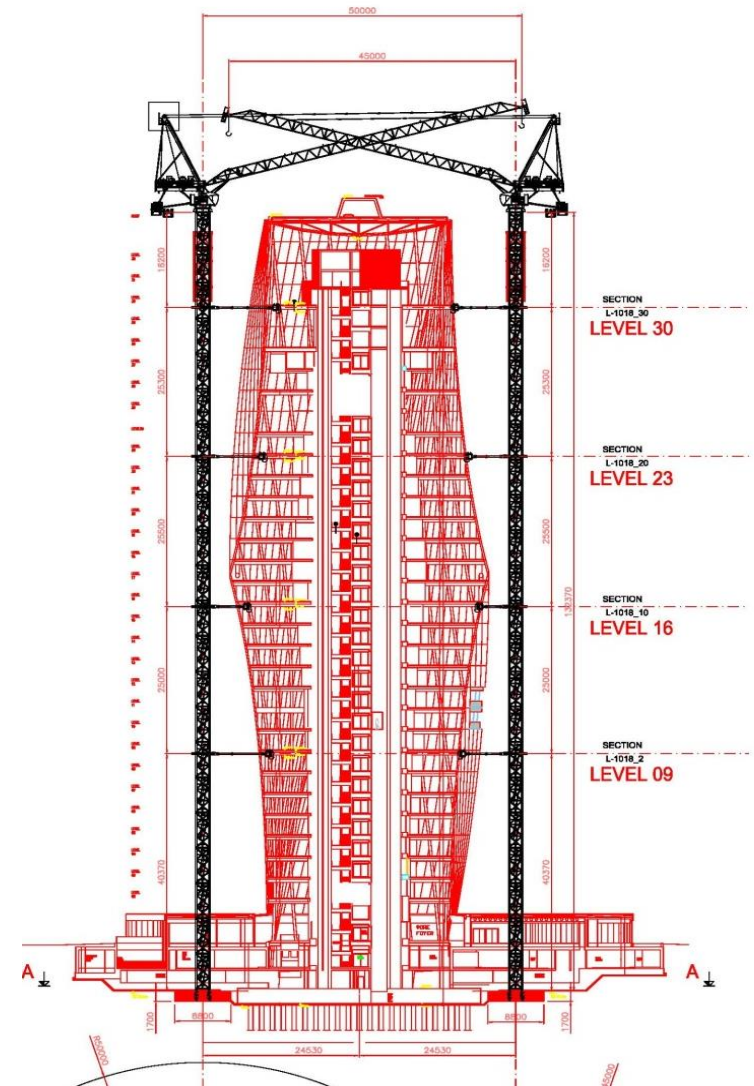
Yesterday to Today: environment

- From ownership to rental
- New regulations
- New buildings design
- Heading to the sky
- Safety



Yesterday to Today: relationship

- Buy only
- Service
- Collaboration:
Application Engineering



Application Engineering

- Close to customers needs
- Openness to evaluate special projects
- Support and collaboration
- Strong relationship



What drives tower cranes evolution then?



Driver: Skyline

1930's



1970's



2000



Driver: Regulation

EUROPEAN STANDARD	EN 14439
NORME EUROPÉENNE	
EUROPÄISCHE NORM	December 2006

ICS 53.020.20

English Version

Cranes - Safety - Tower cranes


Appareils de levage à charge suspendue - Sécurité - Grues à tour Krane - Sicherheit - Turmdrehkrane

This European Standard was approved by CEN on 21 October 2006.

CEN members are bound to comply with the CEN/CENELEC Internal Regulations which stipulate the conditions for giving this European Standard the status of a national standard without any alteration. Up-to-date lists and bibliographical references concerning such national standards may be obtained on application to the Central Secretariat or to any CEN member.

This European Standard exists in three official versions (English, French, German). A version in any other language made by translation under the responsibility of a CEN member into its own language and notified to the Central Secretariat has the same status as the official versions.

CEN members are the national standards bodies of Austria, Belgium, Cyprus, Czech Republic, Denmark, Estonia, Finland, France, Germany, Greece, Hungary, Iceland, Ireland, Italy, Latvia, Lithuania, Luxembourg, Malta, Netherlands, Norway, Poland, Portugal, Romania, Slovakia, Slovenia, Spain, Sweden, Switzerland and United Kingdom.


EUROPEAN COMMITTEE FOR STANDARDIZATION
COMITÉ EUROPÉEN DE NORMALISATION
EUROPÄISCHES KOMITEE FÜR NORMUNG

Management Centre: rue de Stassart, 36 B-1050 Brussels

© 2006 CEN All rights of exploitation in any form and by any means reserved worldwide for CEN national Members. Ref. No. EN 14439:2006 E

Evolution....



Today to Tomorrow: cranes

- **New climbing solutions**
- **24/7 comfortable operator's cab**
- **Elevator/Trolley cabin**
- **Hybrid tower cranes**
- **Crane's controls from office**
- **New material**
- **Tower crane: director of the jobsite**



Today to Tomorrow: environment

- **Mainly rental**
- **Harmonized and severe regulations**
- **Safety**
- **Aggressive pre-cast solutions**

Today to Tomorrow: environment



- **New buildings concept**

Today to Tomorrow: relationship

- 
- Being partners, for the benefit of all

- **Product Development**
- **Integrated Supply Chain**
- **Joint Market Approach**
-

Evolution and future development

