



# Cranes

“The perfect jobsite”:  
How manufacturers and contractors  
jointly manage modern day challenges  
on job sites

**Peter Jehle**

P&J CEO

**Nicola Castenetto**

Director of Customer Care



**WORKS FOR YOU.™**

# We do care about customers

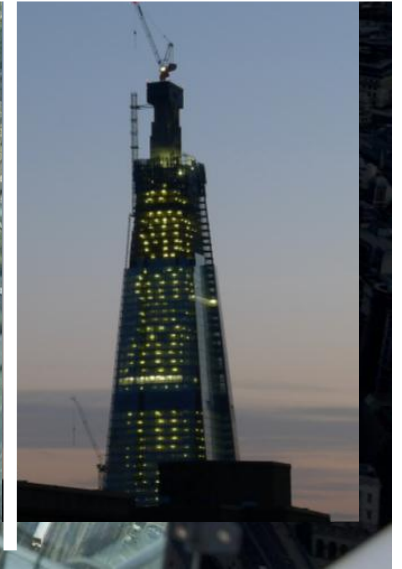
---

- Reliable products
- Knowledgeable service
- Good financial support



We are open to discuss, debate and assist our customers from **Day 1**

# The Shard, London



# Power plant, St. Petersburg



# Palazzo Grassi, Venice – Metro, Copenhagen

---



# Hare Krishna temple, India

---



# The US tower cranes industry

Safety and green approach are driving more and more construction industry and cities development

- New rules for operation
- New rules for inspections
- New rules for approvals
- New rules for climbing
- New rules for dismantling

# 56 Leonard Street, New York: the perfect example

---

- Space limitation
- Noise standard
- Green approach
- Tight schedule
- Complex building's shape
- Building's height
- Secured shore power
- Safety requirements
- Week-end working time



- Hoist winch speeds
- Drum capacity
- Short slewing radius
- Electric power supply
- Free standing heights
- Expertise
- Turnkey solution



# Working together

---



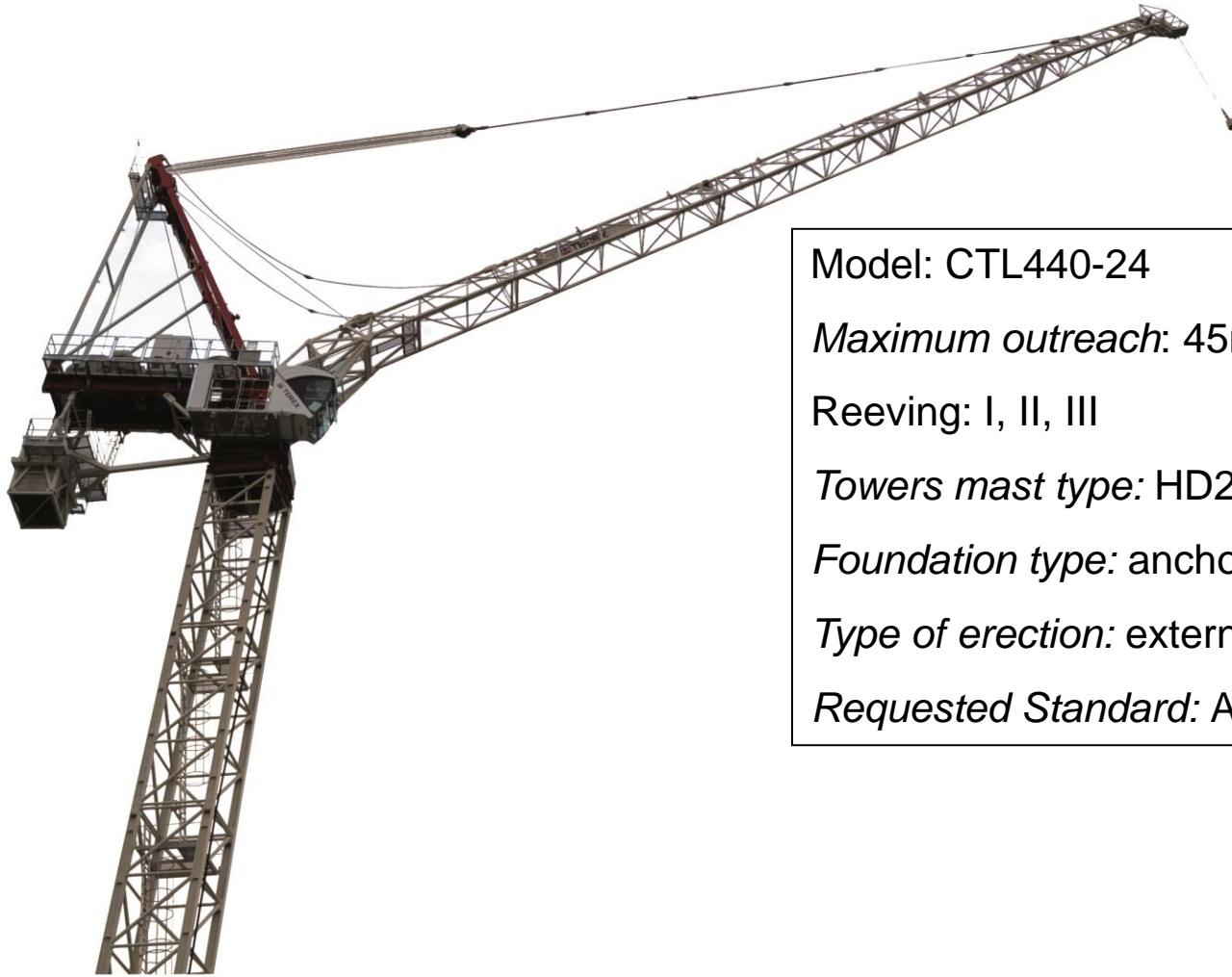
# Yes & No: the right timing

---

- We are listening
- We can say yes
- We always propose
- We can say no
- We build mutual trust
- We ensure experience, speed and results

# The right product: luffing jib tower crane

---



Model: CTL440-24

*Maximum outreach:* 45m

Reeving: I, II, III

*Towers mast type:* HD23

*Foundation type:* anchors casted in concrete

*Type of erection:* external climbing

*Requested Standard:* ASCE 37-02 , ASCE 7-05

# Secure shore power

**CTL440-24 TOWERS: HD23 JIB: 45m [147.6']**

45000 [147.64']

**MAX FREE STANDING HEIGHT**

Y=Actual load  
 X=Structural strength  
 (force generated by the wind to the structure mass)  
 M=Structuring moment  
 Z=Wind coefficient/  
 maximum loads on tower supports

**MAX FREE STANDING HEIGHT FROM 1001 AS**

as supports	
Roofs 45m	Height=48.7m
V	H
M	M
1716	340

**OUT OF SERVICE**

Roofs 45m		Height=48.7m
V	H	M
1705	340	181.51

**OUT OF SERVICE (near wind direction)**

Roofs 45m		Height=48.7m
V	H	M
1705	340	181.51

**as supports**

Roofs 146.7'		Height=190'
V	H	M
1705	340	181.51

**OUT OF SERVICE**

Roofs 146.7'		Height=190'
V	H	M
1705	340	181.51

**OUT OF SERVICE (near wind direction)**

Roofs 146.7'		Height=190'
V	H	M
1705	340	181.51

HYPOTHEtical BUILDING

18400 [60.37']  
3x: HD23 26.6

18488 [60.66']

6268 [20.63']

Climber

**WARNING !**

Tower position referred to the building

Edges tower section

Edges building

MIN 2.75m

**CTT440-24 Jib 45m EQUIPMENT LIST :**

- No.04 ANCHOR FEET HD23 26
- No.03 TOWER SECTIONS HD23 22.6
- No.04 TOWER SECTIONS HD23 22.6
- No.01 CLIMBER HD23
- No.01 TOWER SEC HD23 (genral)
- No.01 TOWER SEC HD23 22.6 (spec)
- No.01 GENSET PLATFORM

**WARNING !**

FOR THIS WORK CALLER USE TOWER'S REFER TO THE OPERATOR MANUAL OF THE CRANE AND THE APPROPRIATE

**WARNING !**

THIS PROGRAMING ANY SECTION POWER FROM CRANE OR THE TOWER, WHEN WORK WITH SECURED POWER, ALSO IN THE EXCESSIVE WORK, YOUR SEE SECTION AT A TOWER.

**TEREX** Customer request n° R101-12

This document has been issued on the basis of the information received from the Customer. TEREX/Climec, however, does not warrant or certify the reliability of the information received and assumes that the data were correct and accurately reflected by the Customer. As a consequence TEREX/Climec and its subsidiaries shall be held responsible for any misreading that is committed by the recipient, without liability of the information received from the Customer.

NO	DATE	DESCRIPTION	REVISION	DATE
05	20-07-12	Added a H23 22.6m section		
04	20-07-12	Added wind speed in sec of service increased scale factor		
03	15-07-12	Revised configuration		
02	15-07-12	Revised configuration		
01	04-07-12	FIRST ISSUE		

**TEREX** CTI440-24 HD23 22/26 on Foundation

Climec Frequenting with climbing work

Layout-frecl-climb

NO	DATE	DESCRIPTION	REVISION	DATE
05	20-07-12	Added a H23 22.6m section		
04	20-07-12	Added wind speed in sec of service increased scale factor		
03	15-07-12	Revised configuration		
02	15-07-12	Revised configuration		
01	04-07-12	FIRST ISSUE		

**TEREX** CTI440-24 HD23 22/26 on Foundation

Climec Frequenting with climbing work

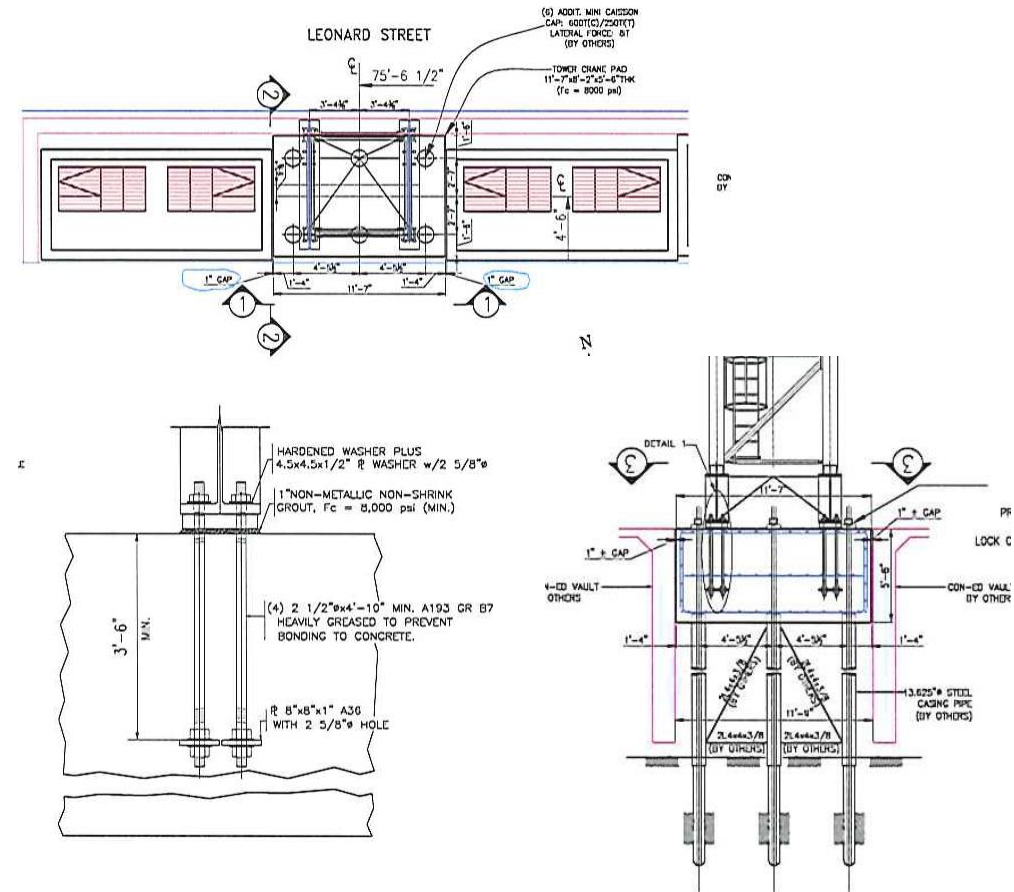
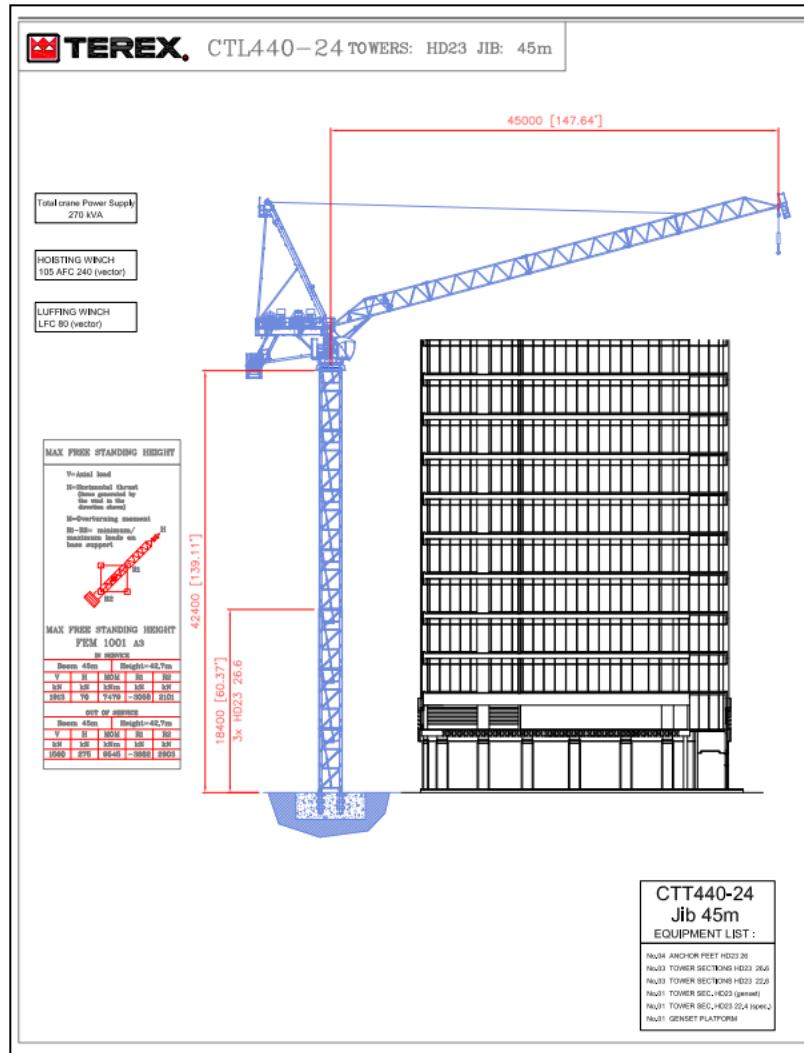
Layout-frecl-climb

# Certifications: a turnkey delivery

---



# Free standing and foundation design



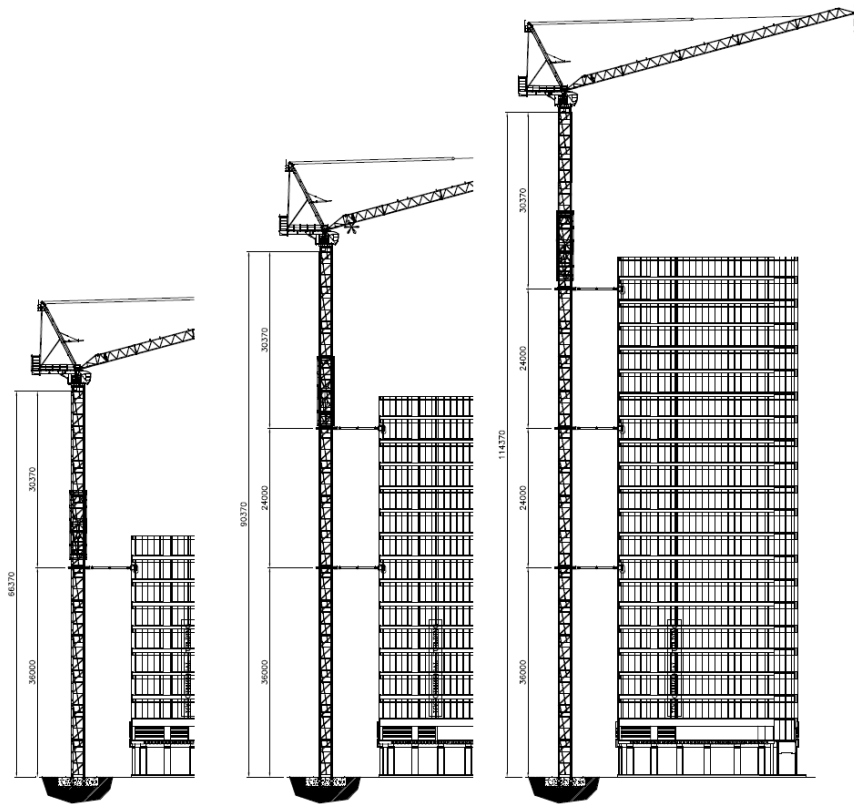
# SAFETY

---

- Intense training
- Pre-planning of erection sequences
- Safe use of hydraulic torque wrenches
- Extensive Practice on hand signals
- Practice on rigging both in the factory and in Virginia prior to erection

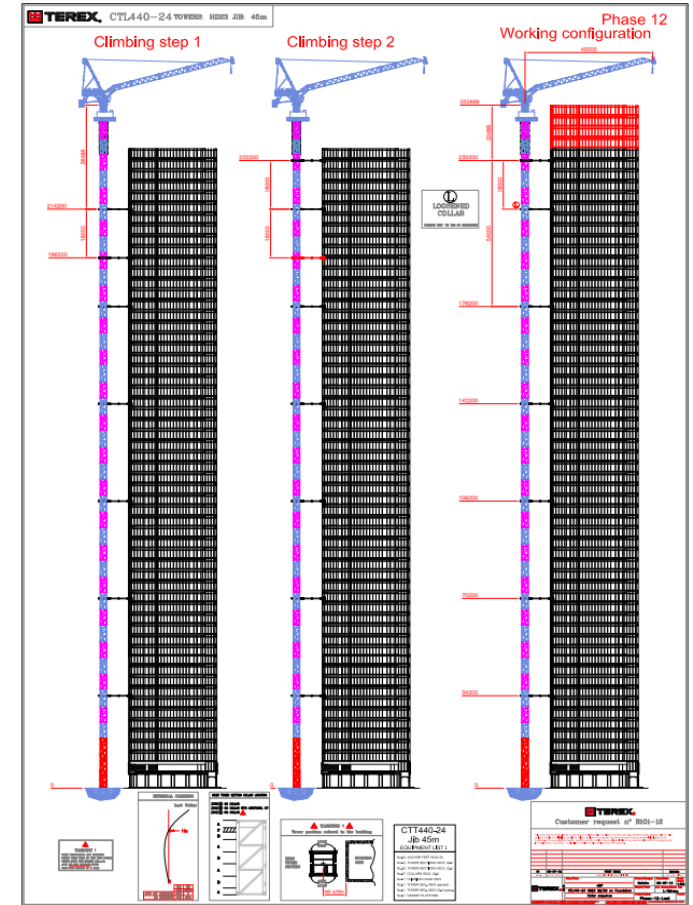
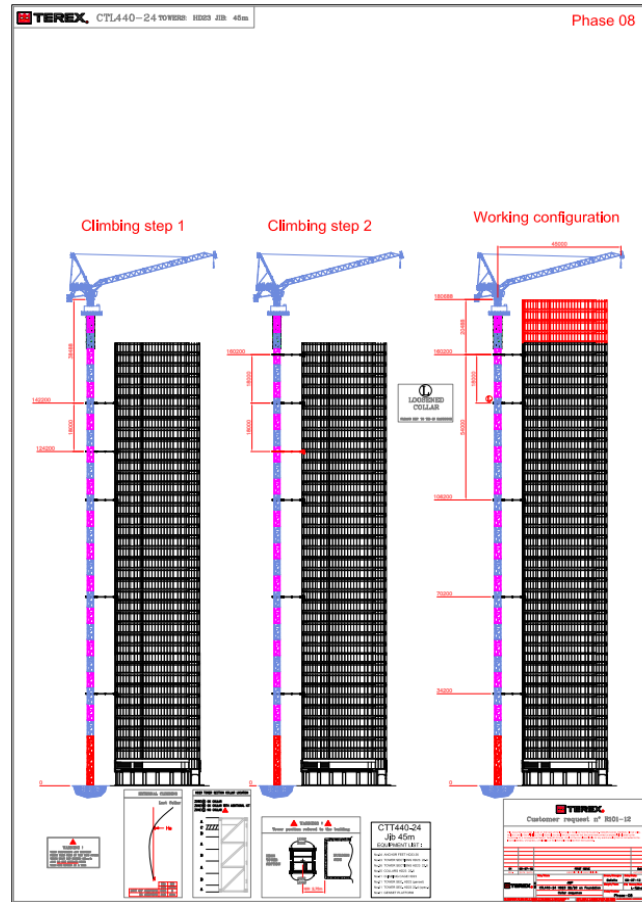
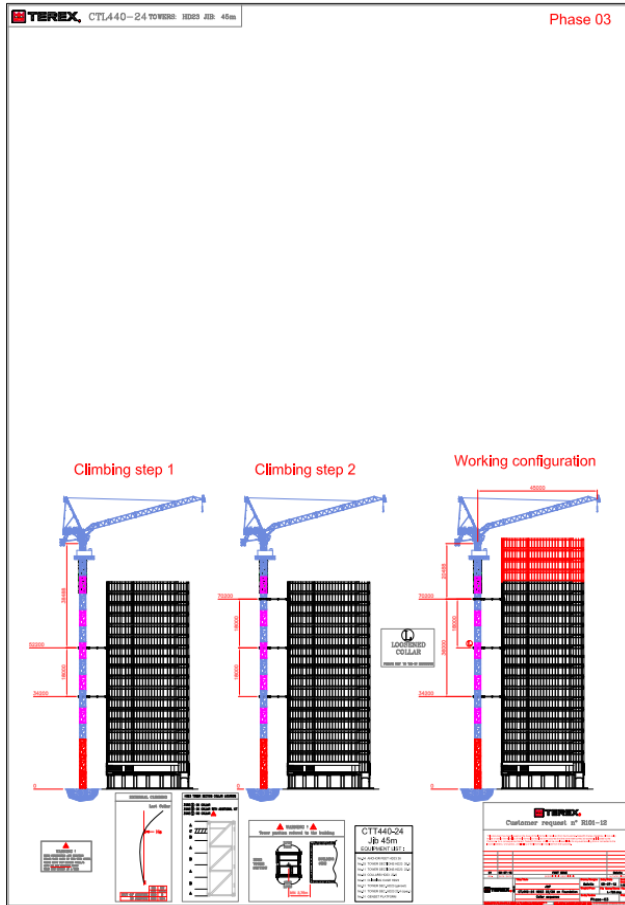
# Collars positioning and tie-in design

- Mast eight: 830 feet (230 mts)
- N° 7 tie-in levels





# Climbing steps



# Early stages to finally reshape the view with **Passion**

---





# Delivering Success

# DELIVERING SUCCESS

CRANES



**EXPERIENCE**  
**SPEED**  
**RESULTS**

*Thank you*

**DELIVERING SUCCESS** is what drives us. We are a global manufacturer with strong local roots and a broad product offering that reflects over a century of **EXPERIENCE**. We are committed to **SPEED**, aiming for the highest level of responsiveness in everything we do to maximize your uptime and return on investment. Because in the end, our customers' **RESULTS** are what really matter.



**WORKS FOR YOU.™**