

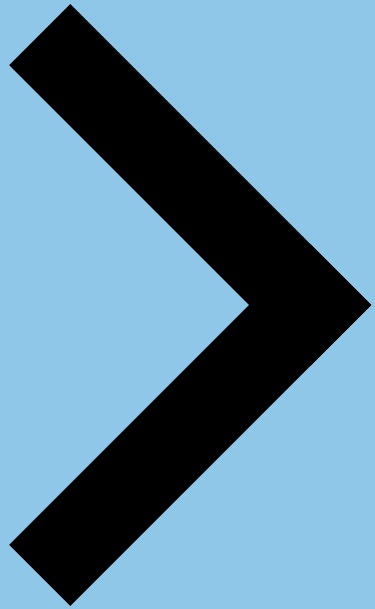
# THE MEN FROM MARR'S

## HOW TOWER CRANES ARE CHANGING THE GAME OF LARGE-SCALE CONSTRUCTION PROJECTS

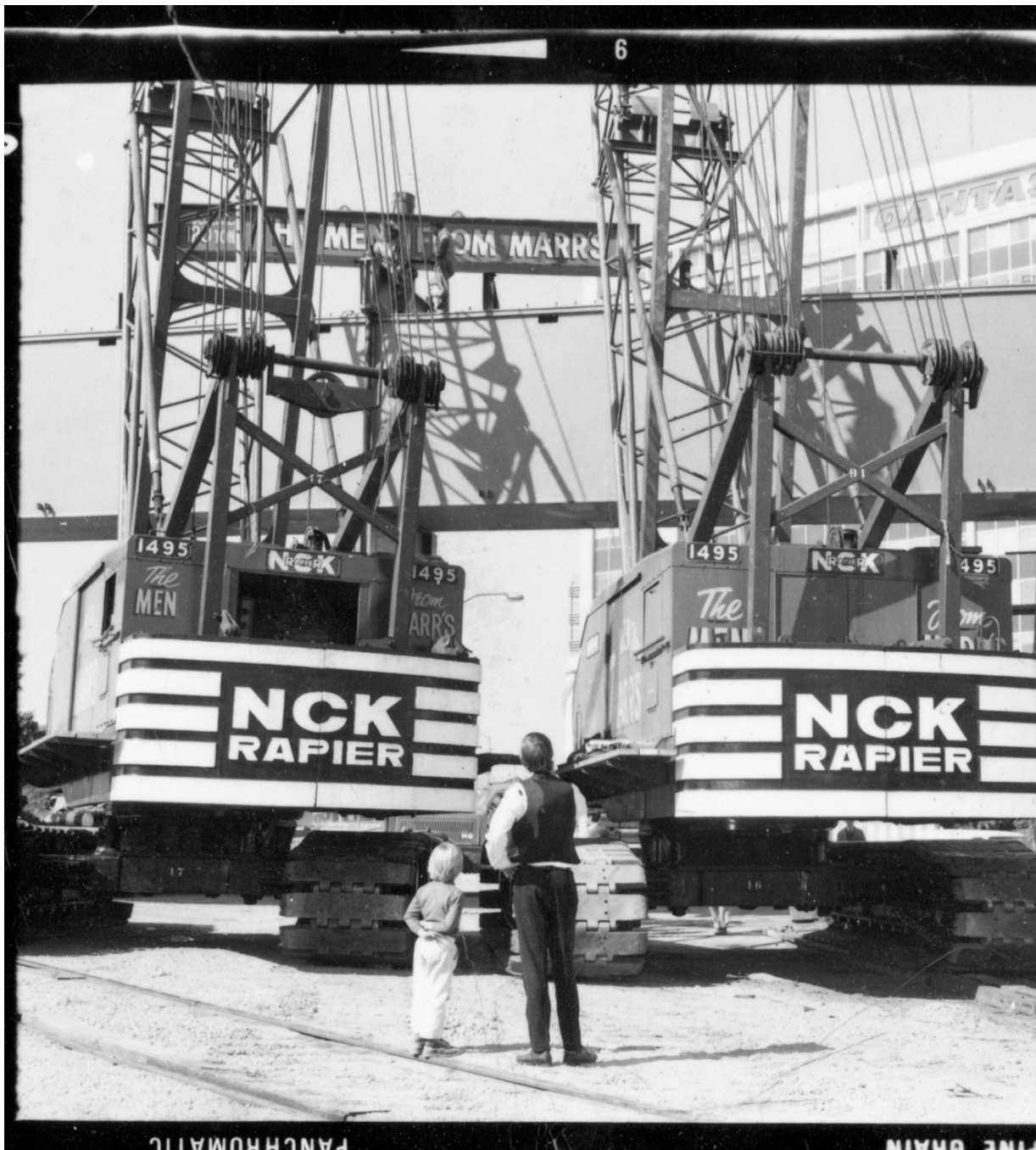
**SIMON MARR DIRECTOR**

THE MEN FROM MARR'S (AUSTRALIA)

**THE MEN FROM  
MARR'S**



*What does an iphone have  
to do with a tower crane?*



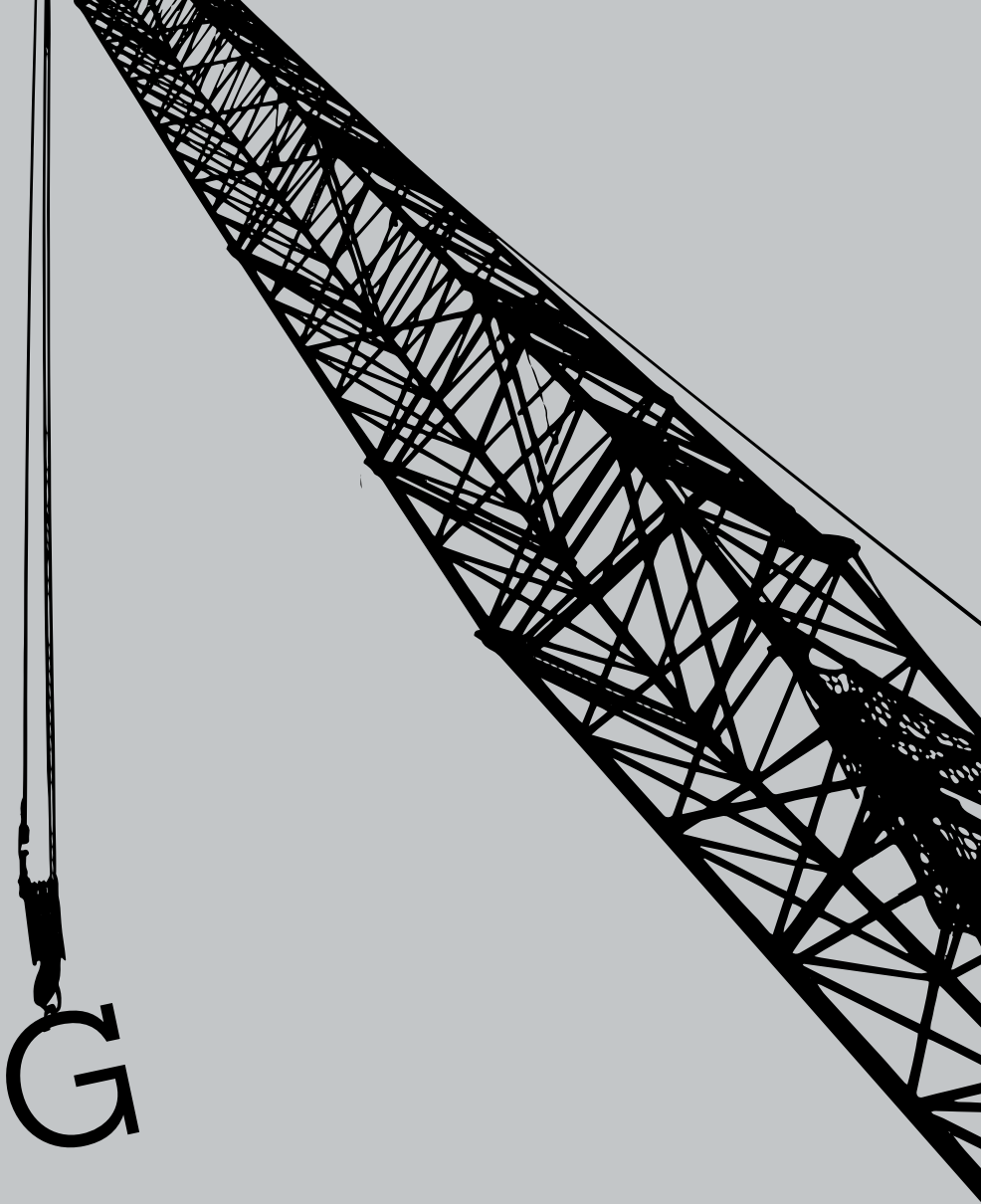


---

WE'RE A  
THIRD-  
GENERATION  
FAMILY-  
OWNED  
AND RUN  
BUSINESS

---

WE BELIEVE  
THAT ANYTHING  
IS POSSIBLE





# M 12 80 D

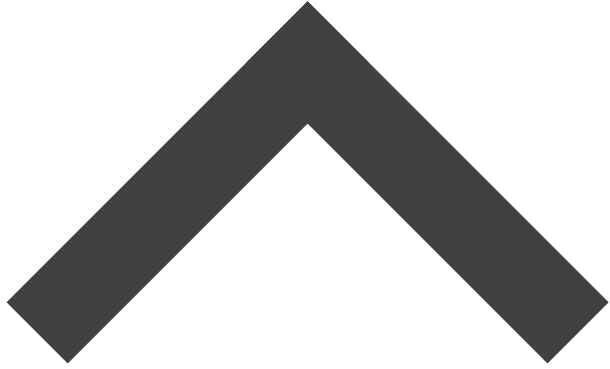
M1280D



M  
24  
80  
D







**UP  
THIS  
WAY**



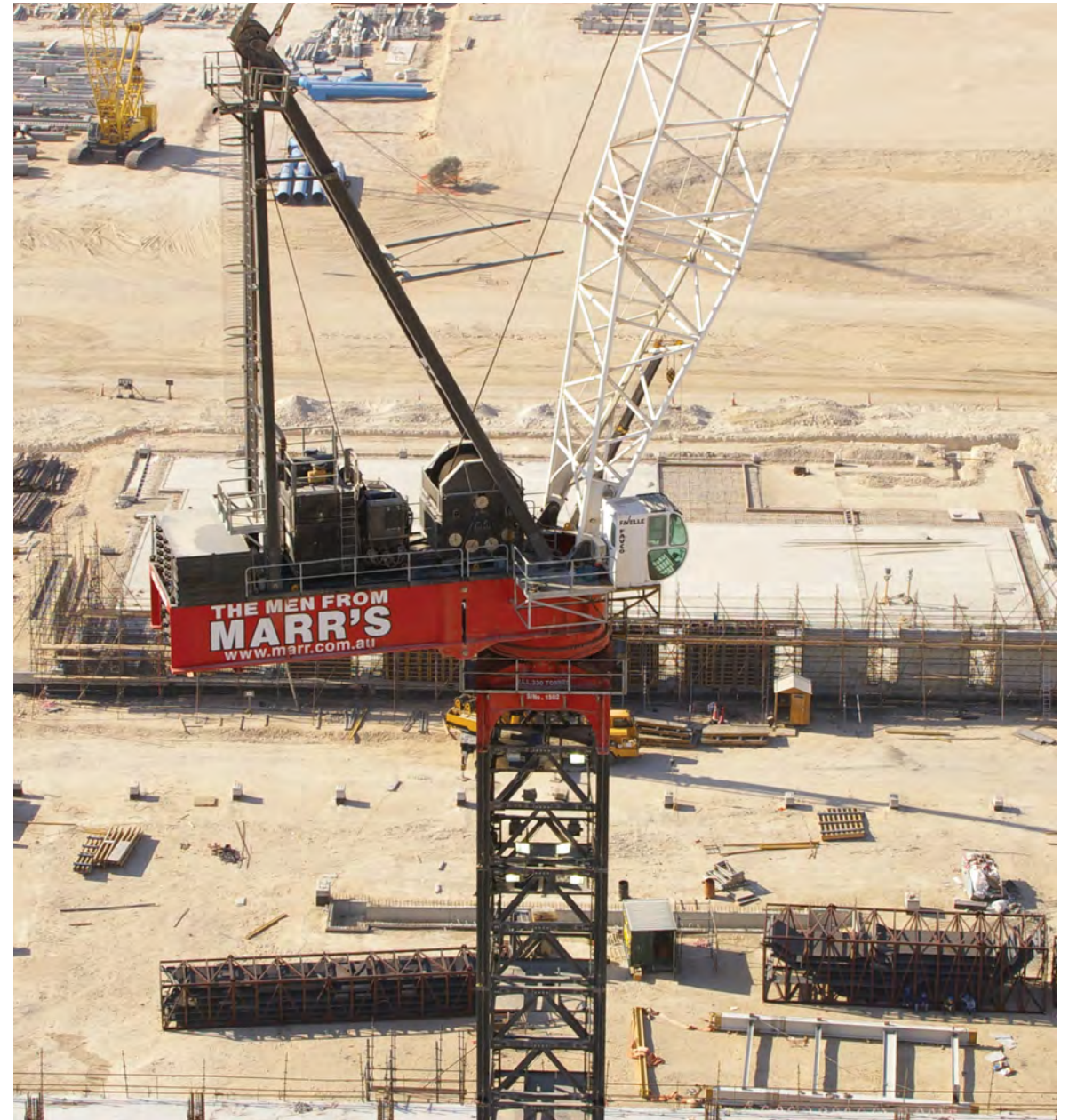


---

*The limiting factor for tower cranes has always been that they didn't have heavy lift capability –*

**BUT WE'VE CHANGED THAT BY DESIGNING AND BUILDING NEW CRANES SUCH AS THE WORLD'S LARGEST CAPACITY TOWER CRANE, THE M2480D**

---



---

CLIENT	KEPPEL SEGHERS
PROJECT	WASTE TO ENERGY PLANT
LOCATION	DOHA, QATAR
SECTOR	POWER GENERATION
DATE	JULY 2007 – NOVEMBER 2008

---

CRANES	1 X M2480D
ENGINEERS	2
CRANE OPERATORS	2
INSTALLATION CREW	6
MAINTENANCE CREW	2

Doha (Qatar)

Doha (Qatar)



THE GORGON LNG PROJECT CHEVRON AUSTRALIA



The Gorgon Project (Chevron Australia)

---

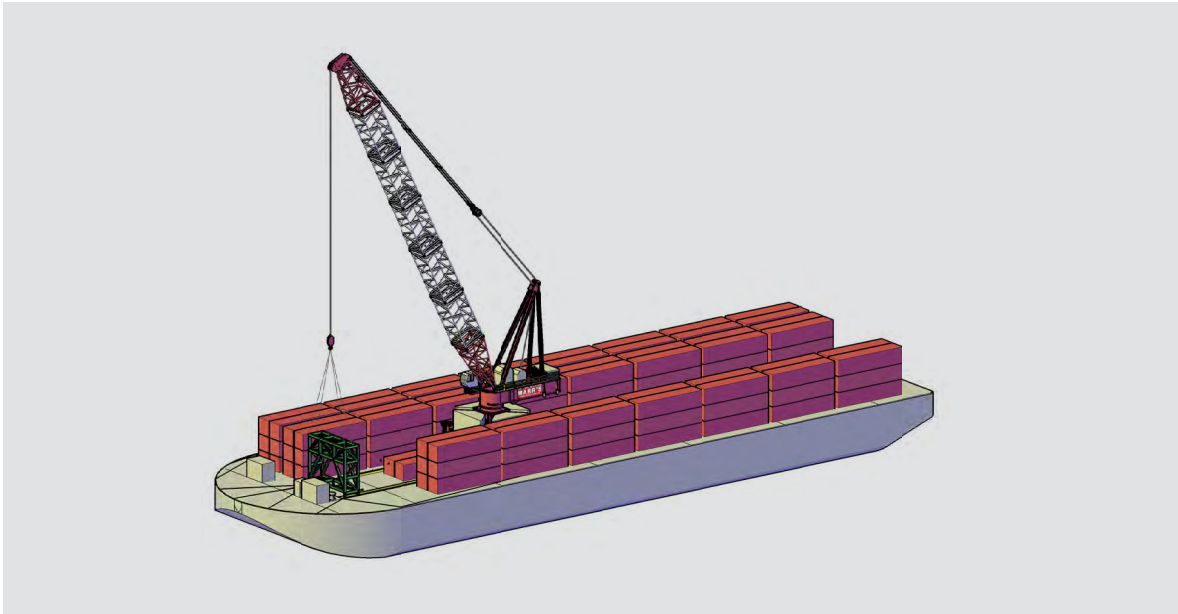
<b>PROJECT</b>	THE CHEVRON-OPERATED GORGON PROJECT
<b>LOCATION</b>	BARROW ISLAND & PERTH WESTERN AUSTRALIA
<b>SECTOR</b>	OIL & GAS
<b>DATE</b>	JUNE 2010 – ONGOING

---

---

<b>CRANES</b>	6 X M2480D
<b>ENGINEERS</b>	1
<b>INSTALLATION CREW</b>	3
<b>MAINTENANCE CREW</b>	1

---











THE MEN FROM  
**MARR'S**  
www.marr.com.au

THE MEN FROM  
**MARR'S**

THE MEN FROM  
**MARR'S**

THE MEN FROM  
**MARR'S**

THE MEN FROM  
**MARR'S**

MAMMOET

MAMMOET

MAMMOET

MAMMOET



---

THIS MEANT  
DELIVERING  
MILLIONS OF  
DOLLARS OF FREIGHT  
TO BUILD THE LNG  
PLANT ON BARROW  
ISLAND IN THE FACE  
OF DANGEROUS SEAS,  
UNPREDICTABLE  
WEATHER PATTERNS  
AND CYCLONIC  
CONDITIONS.

---





FINELLE FAYCO

THE MEN FROM  
**MARR'S**  
www.mar.com.au

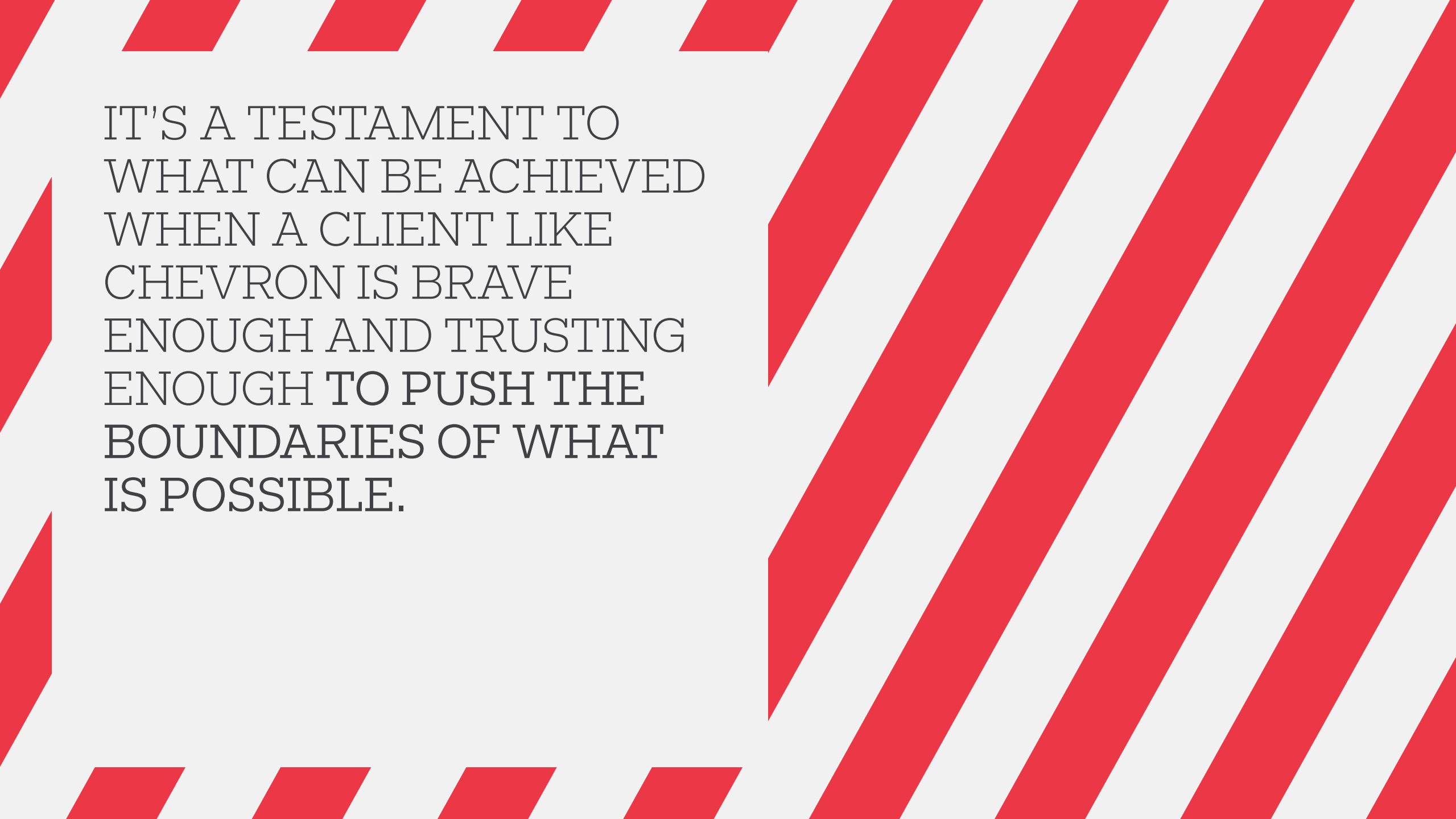
THE MEN FROM  
**MARR'S**

MARR'S

MARR'S

MARR'S



The background features a white field with red diagonal stripes. On the left side, there are four short, parallel red stripes. On the right side, there are four long, parallel red stripes that extend from the top to the bottom of the frame. The text is centered in the white space between these stripe groups.

IT'S A TESTAMENT TO  
WHAT CAN BE ACHIEVED  
WHEN A CLIENT LIKE  
CHEVRON IS BRAVE  
ENOUGH AND TRUSTING  
ENOUGH TO PUSH THE  
BOUNDARIES OF WHAT  
IS POSSIBLE.



Traditional crane solution





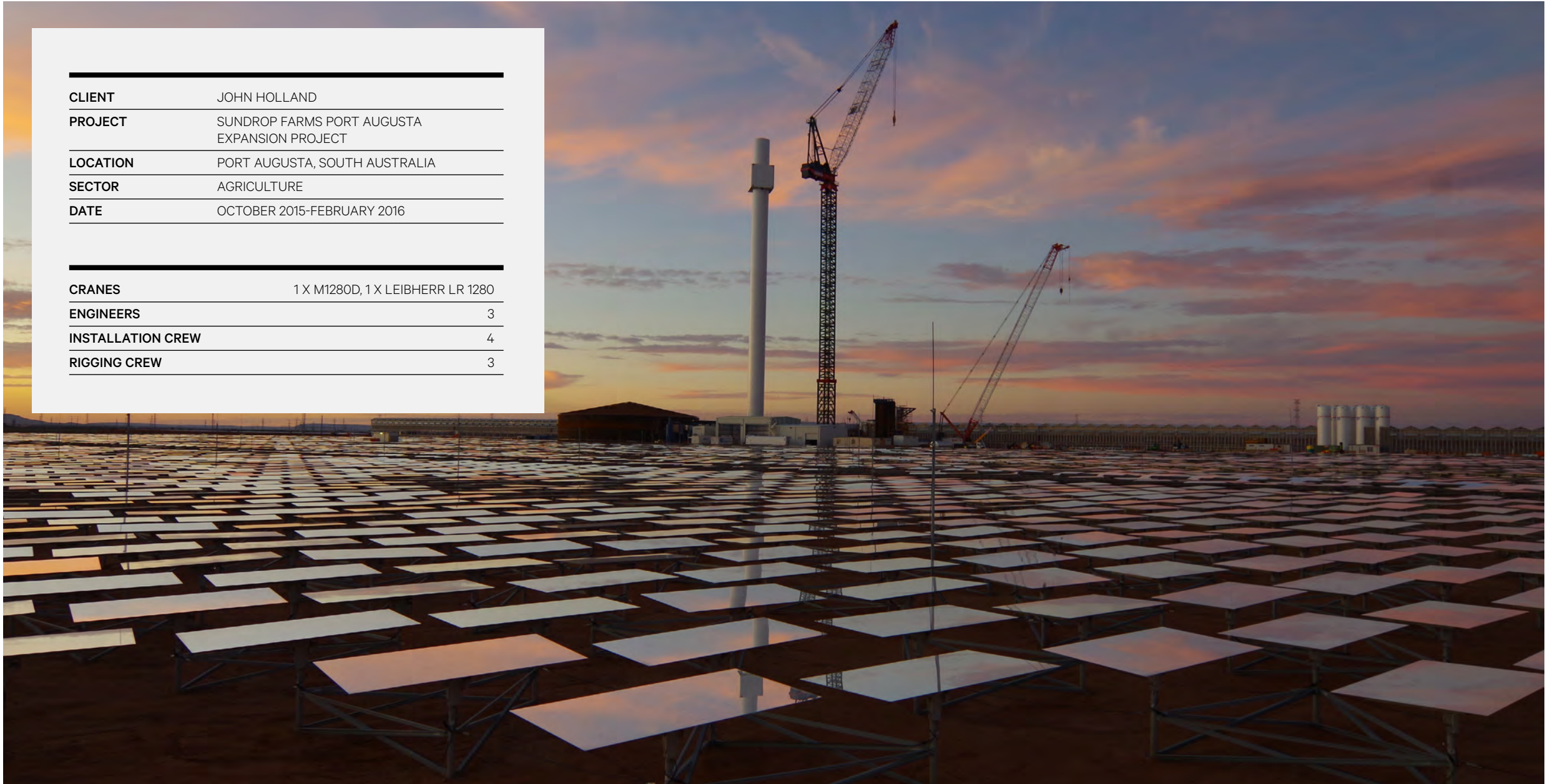
SUNDROP FARMS PORT AUGUSTA, SOUTH AUSTRALIA JOHN HOLLAND GROUP

---

<b>CLIENT</b>	JOHN HOLLAND
<b>PROJECT</b>	SUNDROP FARMS PORT AUGUSTA EXPANSION PROJECT
<b>LOCATION</b>	PORT AUGUSTA, SOUTH AUSTRALIA
<b>SECTOR</b>	AGRICULTURE
<b>DATE</b>	OCTOBER 2015-FEBRUARY 2016

---

<b>CRANES</b>	1 X M1280D, 1 X LEIBHERR LR 1280
<b>ENGINEERS</b>	3
<b>INSTALLATION CREW</b>	4
<b>RIGGING CREW</b>	3







---

A REVOLUTIONARY  
CRANEAGE  
SOLUTION FOR A  
GROUND-BREAKING  
SUSTAINABLE  
AGRICULTURAL  
PROJECT.

---

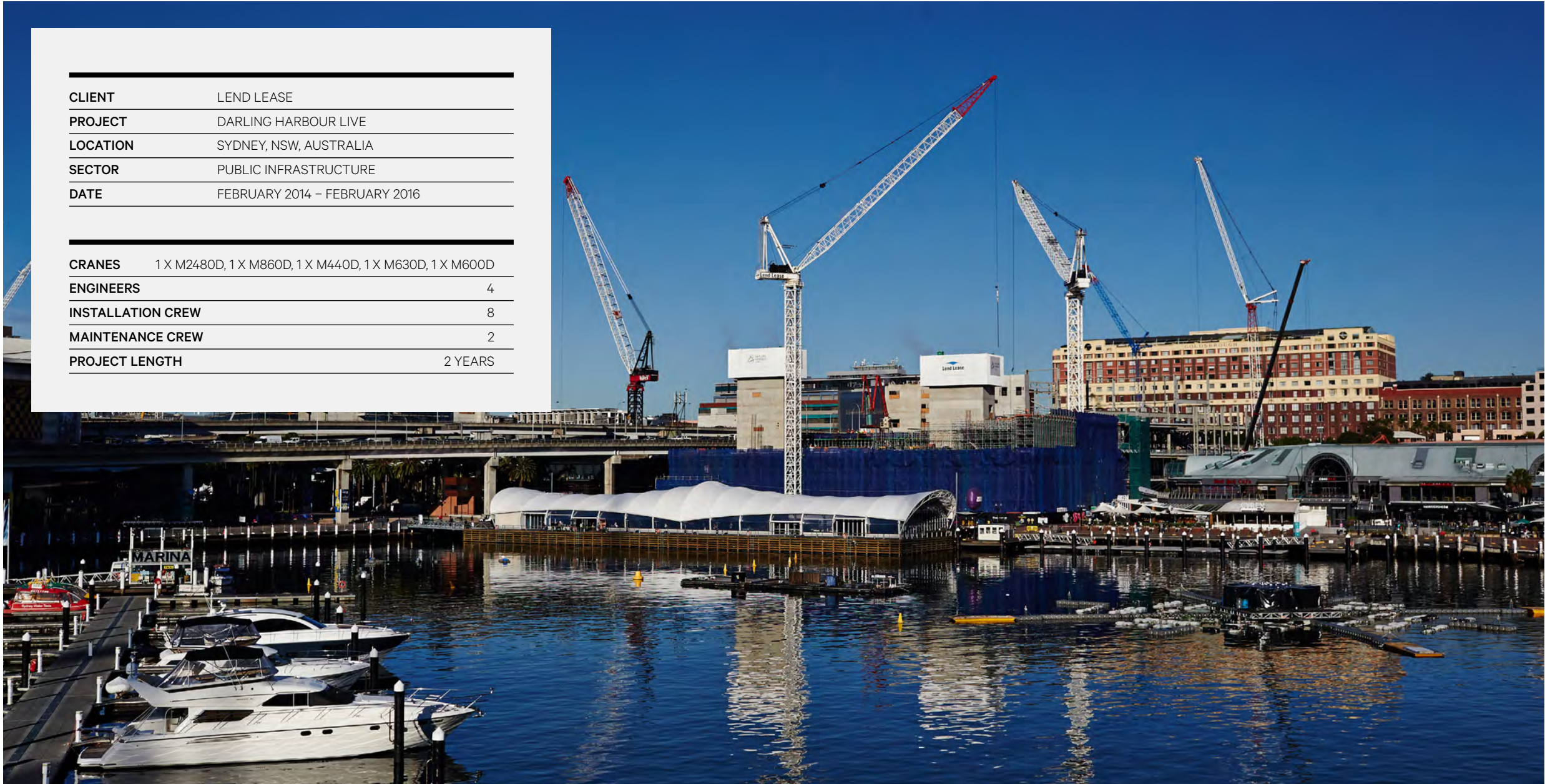




## DARLING HARBOUR LIVE, SYDNEY LENDLEASE AUSTRALIA

CLIENT	LEND LEASE
PROJECT	DARLING HARBOUR LIVE
LOCATION	SYDNEY, NSW, AUSTRALIA
SECTOR	PUBLIC INFRASTRUCTURE
DATE	FEBRUARY 2014 – FEBRUARY 2016

CRANES	1 X M2480D, 1 X M860D, 1 X M440D, 1 X M630D, 1 X M600D
ENGINEERS	4
INSTALLATION CREW	8
MAINTENANCE CREW	2
PROJECT LENGTH	2 YEARS

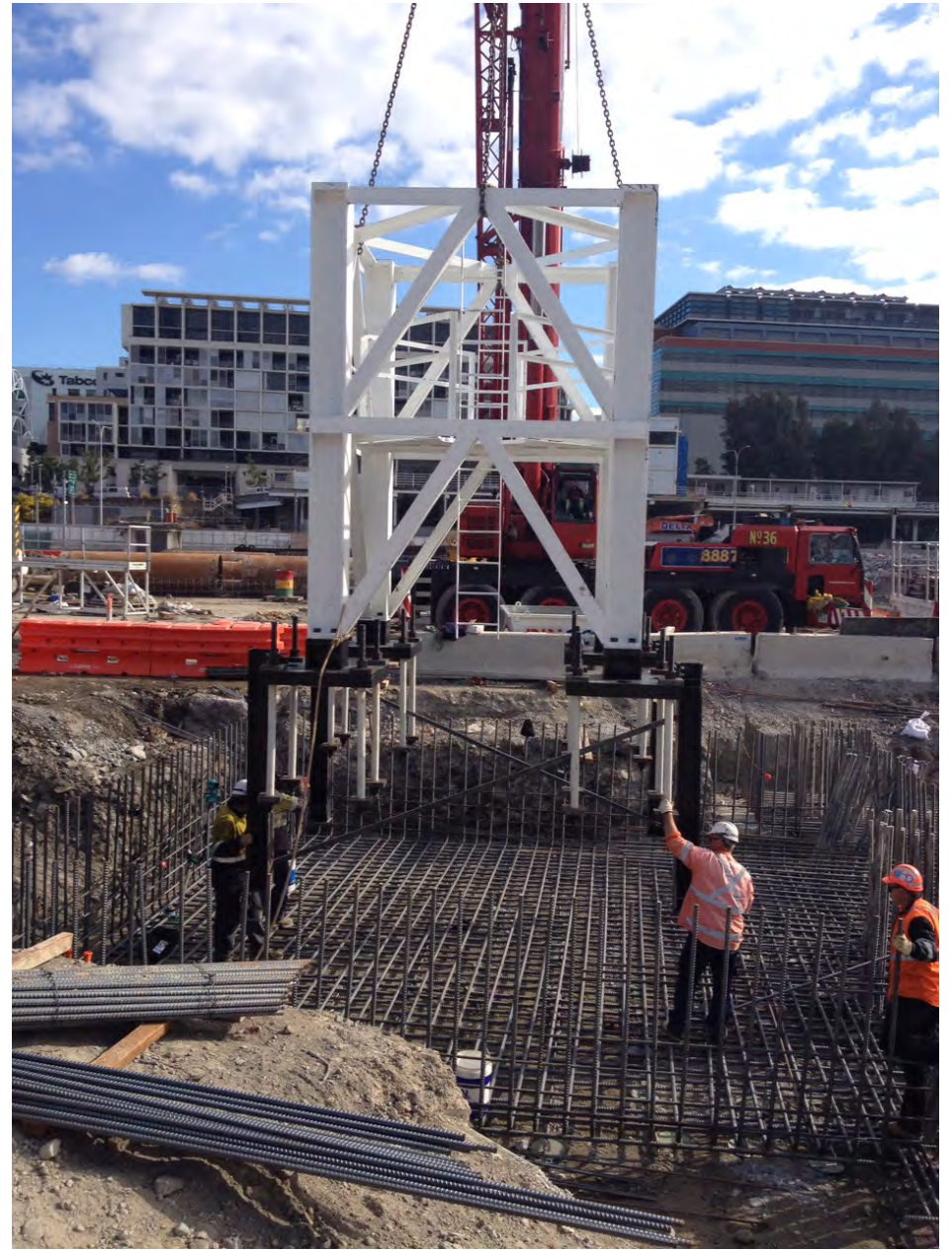


---

THE MEN FROM  
MARR'S HAS  
CHANGED THE  
GAME FOR THE  
CONSTRUCTION  
OF HIGH DENSITY  
INNER-CITY  
INFRASTRUCTURE  
PROJECTS.

---











---

100 CRITICAL LIFTS  
FOR ELEMENTS  
WEIGHING BETWEEN  
10 AND 100 TONNES  
COMPLETED.

---





FORCE ACCESS

JLG LIFT

WILLIS TOWERS WATSON

AVCO



QUESTIONS?



M1680D (Fugro Seacore, 10km off the coast of Fremantle, Western Australia)

*Thank you.*

---

CONNECT WITH US

**SIMON MARR**

**T** +61 2 9738 5533

**MARR.COM.AU**

 /COMPANY/THE-MEN-FROM-MARRS-MARR-CONTRACTING-

 THE\_MEN\_FROM\_MARRS

**THE MEN FROM  
MARR'S**